



# MONTHLY MEMBERSHIP PROGRESS REPORT

District 351

Results as of: 04/30/2019

GMT: AHMED MOSTAFA

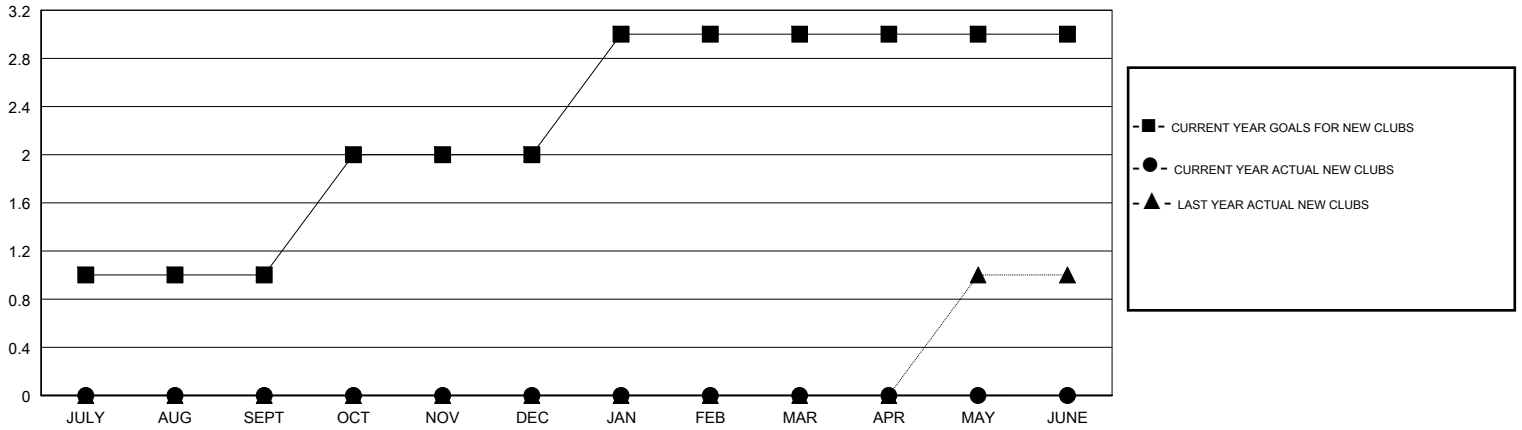
LOCATION LEBANON

GMT CA

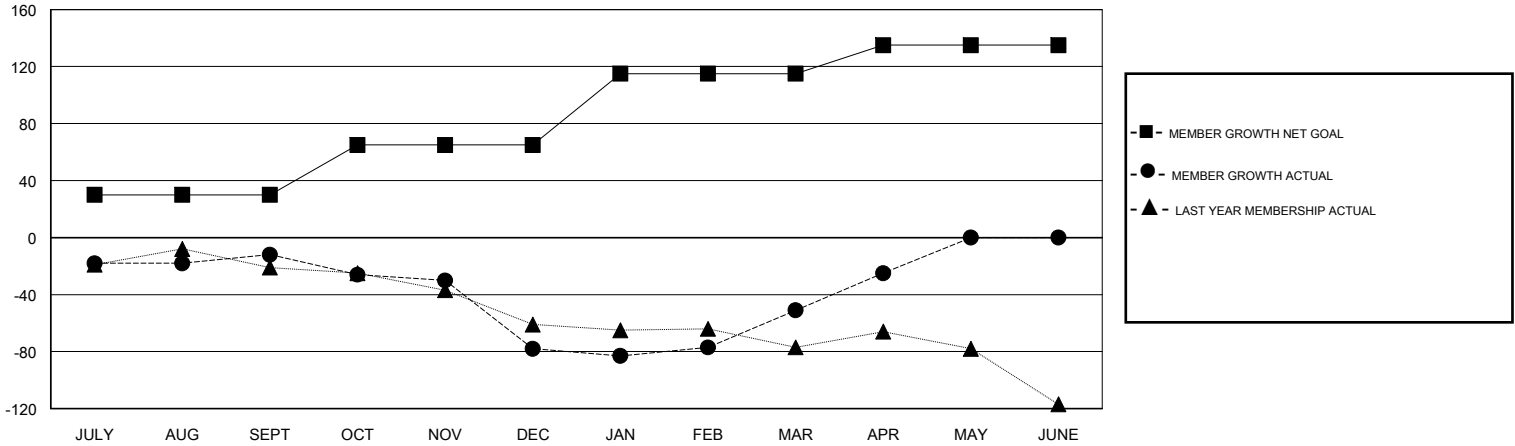
Clubs			
RESULTS FOR 2018-2019			
QUARTER	NEW CLUB GOAL	NEW CLUBS	DROPPED CLUBS
JULY/AUG/SEPT	1	0	0
OCT/NOV/DEC	1	0	0
JAN/FEB/MAR	1	0	2
APR/MAY/JUNE	0	0	0

Members			
RESULTS FOR 2018-2019			
QUARTER	MEMBER GROWTH NET GOAL	MEMBER GROWTH ACTUAL	DROPPED MEMBERS ACTUAL (including transfers)
JULY/AUG/SEPT	30	36	45
OCT/NOV/DEC	35	34	98
JAN/FEB/MAR	50	63	32
APR/MAY/JUNE	20	34	5

GOALS AND ACTUAL NEW CLUBS CUMULATIVE



GOALS AND ACTUAL MEMBERS CUMULATIVE



DROPPED CLUBS: 2
------------------

55 CLUBS OF 116 ADDED 1 OR MORE NEW MEMBERS

GENDER DISTRIBUTION	
MALE	1,308 (54.12%)
FEMALE	1,109 (45.88%)
Women Percentage Fiscal Year Goal: 50%	

DROPPED MEMBERS	
DECEASED	3
CLUB CANCELLED	0
OTHER	177
<b>TOTAL</b>	<b>180</b>

[CLICK HERE FOR CUMULATIVE MEMBERSHIP DATA](#)

TOTAL FAMILY UNIT MEMBERS	643
FAMILY MEMBERS PAYING HALF DUES	361